



© Jason Houston

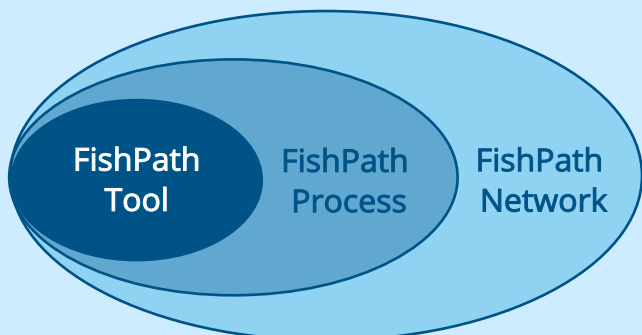
## The Global Challenge for Data- and Capacity-Limited Fisheries

A large majority of the world's fisheries, representing nearly half of global catch, come from coastal regions of the ocean where biodiversity and food security issues are highest. Yet in many cases, these coastal fisheries receive fewer resources and attention, creating capacity and data limitations that lead to overfishing, degradation of coastal ecosystems, and place fishing-dependent livelihoods at risk. Furthermore, effective fisheries management has traditionally relied on data such as the amount of fish caught, the size and age structure of the fish population, and much more. Conventional approaches to data collection and stock assessments are often expensive and resource-intensive.

Most developed countries carry out regular stock assessments for top commercial fisheries, so these fisheries tend to be better managed. But many coastal nations do not have the resources to meet data collection requirements for traditional stock assessments, and thus their fisheries go largely unmanaged. Although many tools have been developed for managing coastal and data-limited fisheries, an enormous challenge has been bringing these tools to places that need them most and more importantly tailoring actions to unique conditions and stakeholder needs in each fishery and locality.

### What is FishPath?

FishPath is an approach to setting fisheries on a path to sustainability that involves 3 main components:

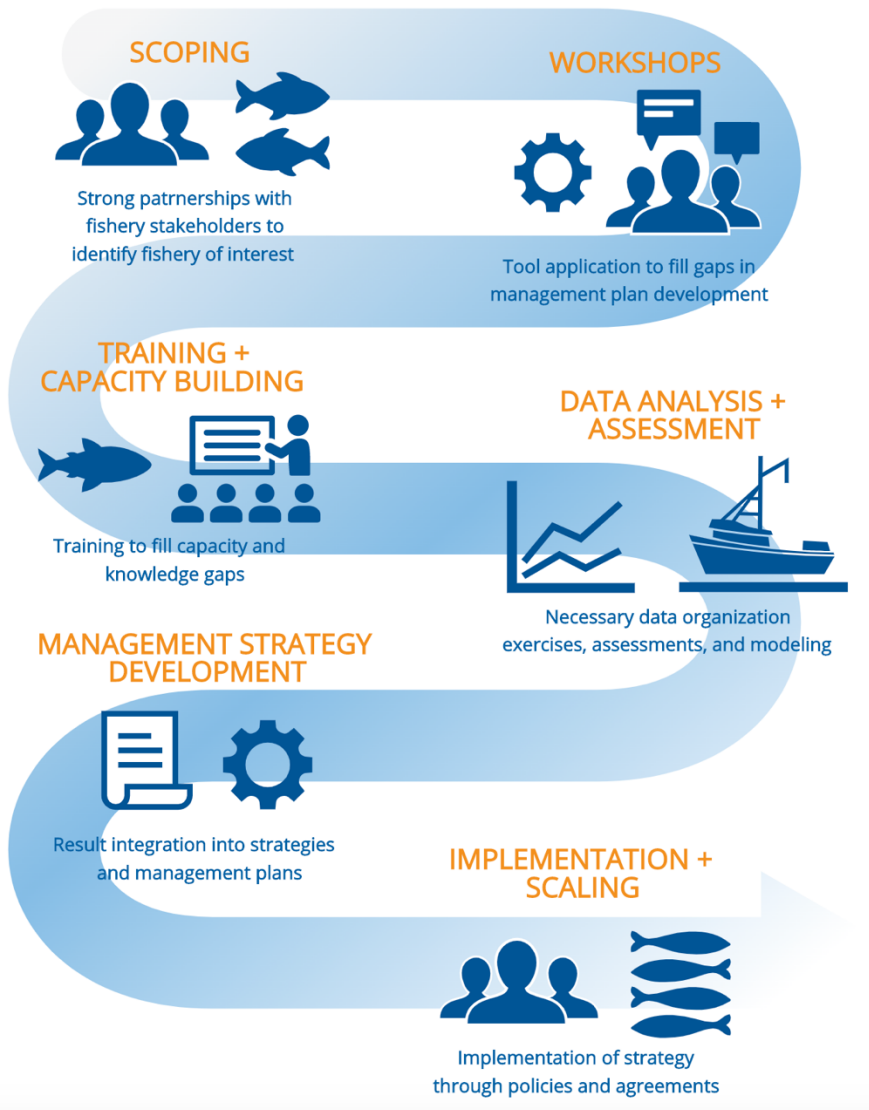


### The FishPath Solution

At The Nature Conservancy, our vision is for global fisheries to be managed in a way that results in sustainable fisheries, stable supplies of seafood, and biodiversity conservation. To achieve this vision and overcome challenges for coastal fisheries, we have developed FishPath. FishPath was initiated by an expert working group and refined and expanded by The Nature Conservancy, with partners at USA NOAA Fisheries and Australia's Commonwealth Scientific and Industrial Research Organization (CSIRO).

Today, FishPath includes 3 components: 1) the online FishPath tool; 2) the FishPath stakeholder engagement process; and 3) the FishPath Network of scientists and practitioners.

## The FishPath Process in Action



To date, the FishPath process has been applied in over 10 countries spanning 5 continents, with more than 40 tailored workshops and over 300 participants.



The core FishPath team includes The Nature Conservancy, USA NOAA Fisheries, and CSIRO in Australia, working together.



We are building the FishPath Network, a group of fisheries scientists & practitioners implementing FishPath and guiding fisheries towards sustainability.

## Contact Us

Carmen Revenga | [crevenga@tnc.org](mailto:crevenga@tnc.org)

Jono Wilson | [jono.wilson@tnc.org](mailto:jono.wilson@tnc.org)

## Further Information

The Nature Conservancy is a global conservation organization dedicated to conserving the lands and waters on

which all life depends. Guided by science, we create innovative, on-the-ground solutions to our world's toughest challenges so that nature and people can thrive together. We are tackling climate change, conserving lands, waters and oceans at an unprecedented scale, providing food and water sustainably and helping make cities more sustainable. Working in 72 countries, we use a collaborative approach that engages local communities, governments, the private sector, and other partners. To learn more, visit [www.nature.org](http://www.nature.org) or follow @nature\_press on Twitter.